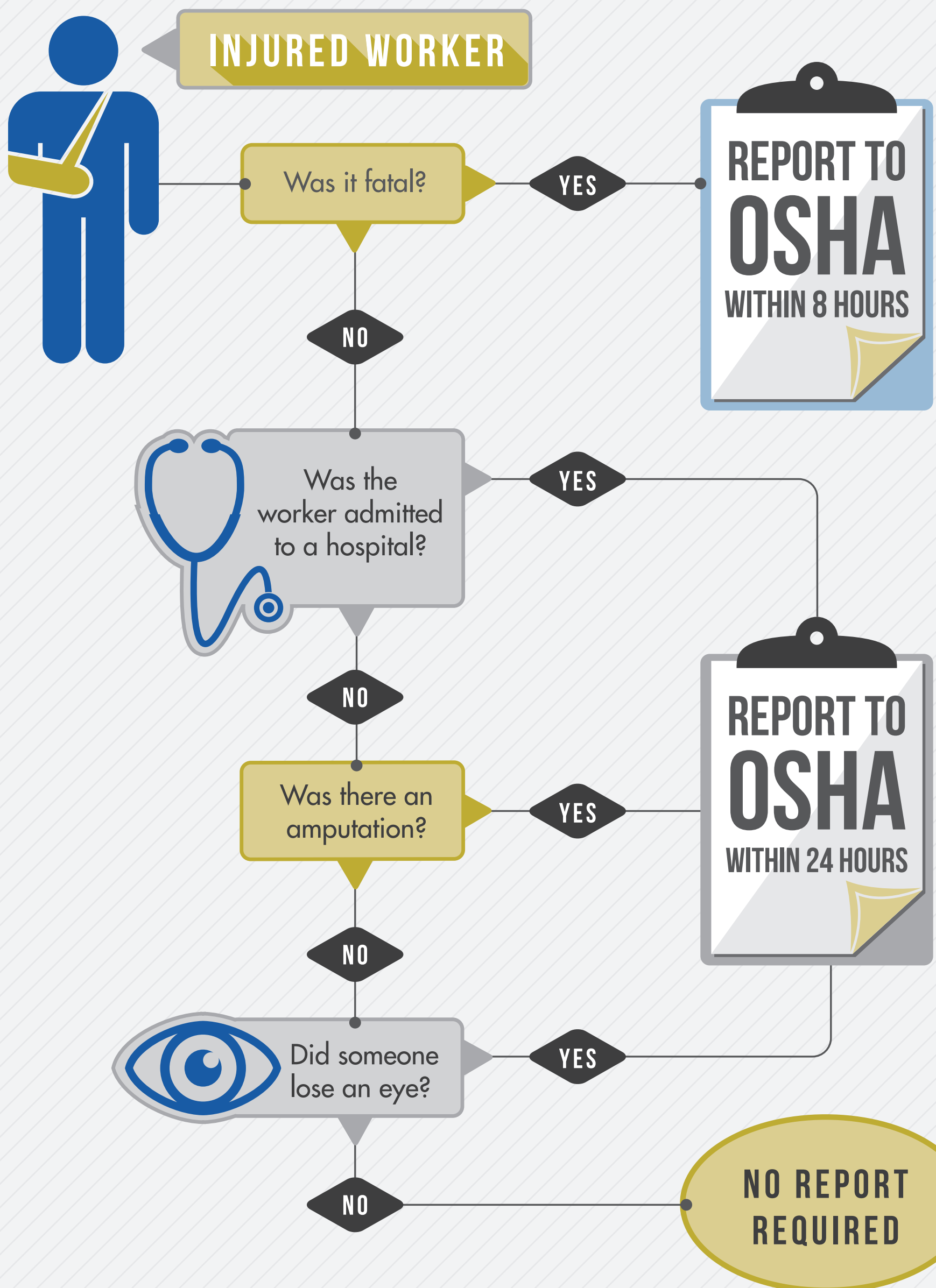


OSHA Injury Reporting Flowchart



Starting on Jan. 1, 2015, all employers under OSHA's federal jurisdiction will be required to report all work-related fatalities within eight hours as well as any inpatient hospitalizations, amputations and losses of an eye within 24 hours. Previously, an employer was only expected to report to OSHA after a fatality or when three or more workers were hospitalized in the same incident.